



## In-Rack PC with Wonderware™ SuiteLink-DAServer

### PC56-SLS

The PC56 with SLS-DAServer (Data Access Server) allows you to access data from a ControlLogix™ PLC directly across the backplane, and then communicate via SuiteLink, DDE, or FastDDE to local or remote Application Objects.

The PC56-SLS is an industrial PC for the ControlLogix platform that provides high speed communication with both local and remote ControlLogix processors. The PC56-SLS allows users to communicate with ControlLogix processors in an efficient, distributed, and cost-effective fashion. The PC56-SLS includes a graphical interface called Archestra SMC (Management Console) for easy configuration and diagnostic support.

### Features and Benefits

The PC56-SLS allows you to access tag data from the ControlLogix Controller to a DAS Engine located on the PC56-SLS.

- Improved reliability and performance: No middleware between client software and ControlLogix hardware
- Ability to run Application Objects: Application Objects can be run locally on the PC56-SLS providing highly reliable applications, because the application is right in the rack with the ControlLogix processor.
- Easy Hardware Redundancy: Using two PC56-SLS, and then simply specifying two IP addresses for a very fast switching mechanism to support Redundancy.
- Communicates with the ControlLogix controller directly through the ControlBus backplane, which simplifies installation and improves performance.
- No modifications to the ControlLogix controller program are necessary.
- Supports multiple ControlLogix controllers.
- Supports both local (same rack as PC56-SLS) and remote (via 1756-ENET or 1756-CNET modules) controllers.
- Includes configuration tools. Tag scan rates can be individually configured for optimal performance.

## In-Rack PC with Wonderware SuiteLink-DAServer PC56-SLS

*The PC56 SLS allows you to access data from the ControlLogix Controller to a DAS Engine located on the PC56-SLS. Multiple ControlLogix controllers may be accessed, either in the local rack or in remote racks connected via Ethernet or ControlNet.*

### How to Contact Us: Sales and Support

All ProSoft Technology products are backed with unlimited technical support. Contact our worldwide Technical Support team directly by phone or email:

#### Asia Pacific

+603.7724.2080, asiapc@prosoft-technology.com  
Languages spoken include: Chinese, Japanese, English

#### Europe – Middle East – Africa

+33 (0) 5.34.36.87.20, support.EMEA@prosoft-technology.com  
Languages spoken include: French, English

#### North America

+1.661.716.5100, support@prosoft-technology.com  
Languages spoken include: English, Spanish

#### Latin America (Sales only)

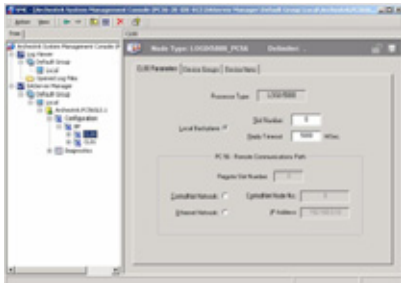
+1.281.298.9109, latinam@prosoft-technology.com  
Languages spoken include: Spanish, English

#### Brasil

+55-11.5084.5178, eduardo@prosoft-technology.com  
Languages spoken include: Portuguese, English

## General Specifications

- Communicates directly with the ControlLogix processor across the backplane for the most reliable data access.
- Provides data access via Wonderware client such as InTouch.
- Plug and Play. Can be added to new or existing ControlLogix PLCs without changing the control application
- Ability to read tags from networked processors
- No network connection required for local processors



## Functional Specifications

The PC56 SLS consists of:

- PC56 Industrial PC for the ControlLogix platform
- SMC (Management Console) for easily configuration
- SuiteLink, DDE, and FastDDE
- Windows XP Professional
- 4 GB Compact Flash Drive

## Hardware Specifications

Specification	Description
CPU Processor	Embedded 500 MHz Processor
Memory	512 MB SDRAM System Memory, upgradeable to 1 GB 512 KB SRAM (Battery Backed)
Compact Flash	Compact Flash Type I or II socket
Ports	10/100T IEEE 802.3 Ethernet Isolated Serial RS-232 / RS-422 / RS-485 (2) USB 2.0 / 1.1 High Speed Host
Connectors	VGA, 2 Ethernet, 2 USB
Battery	Rechargeable Lithium Vanadium Pentoxide
Jumpers	COM 1 Mode Selection Battery Enable/Clear CMOS Boot to SAFE STATE (default settings) Hardware Debugger Support
Switches	Recessed Reset Switch

Specification	Description
LED/Display	4-digit alphanumeric status display 3 Status LEDs 1 User LED Red, Green, Off
Real-Time Clock	Precision RTC accurate to +/- 4 minutes per year
Timers	82C54 Timer Clock 14 MHz – Interrupt Interval 1.67619 US
Video	VGA 1920 x 1440 1280 x 1024 256 1024 x 768 56K 800 x 600 16 M 43 Hz Interlaced 56 through 85 Hz Refresh Rates

## Additional Products

ProSoft Technology offers a full complement of hardware and software solutions for a wide variety of industrial communication platforms.

Visit our web site at <http://www.prosoft-technology.com> for a complete list of products.

## Ordering Information

To order this product, please use the following:

**PC56-SLS** In-Rack PC with Wonderware SuiteLink-DA Server

To place an order, please contact your local ProSoft Technology distributor. For a list of ProSoft distributors near you, go to <http://www.prosoft-technology.com>

### Distributors:

Place your order by email or fax to:

### North American / Latin American / Asia Pacific

[orders@prosoft-technology.com](mailto:orders@prosoft-technology.com),  
fax to +1 661.716.5101

### Europe

[europe@prosoft-technology.com](mailto:europe@prosoft-technology.com),  
fax to +33 (0) 5.61.78.40.52

Copyright © ProSoft Technology, Inc. 2000 - 2007. All Rights Reserved.  
January 30, 2007